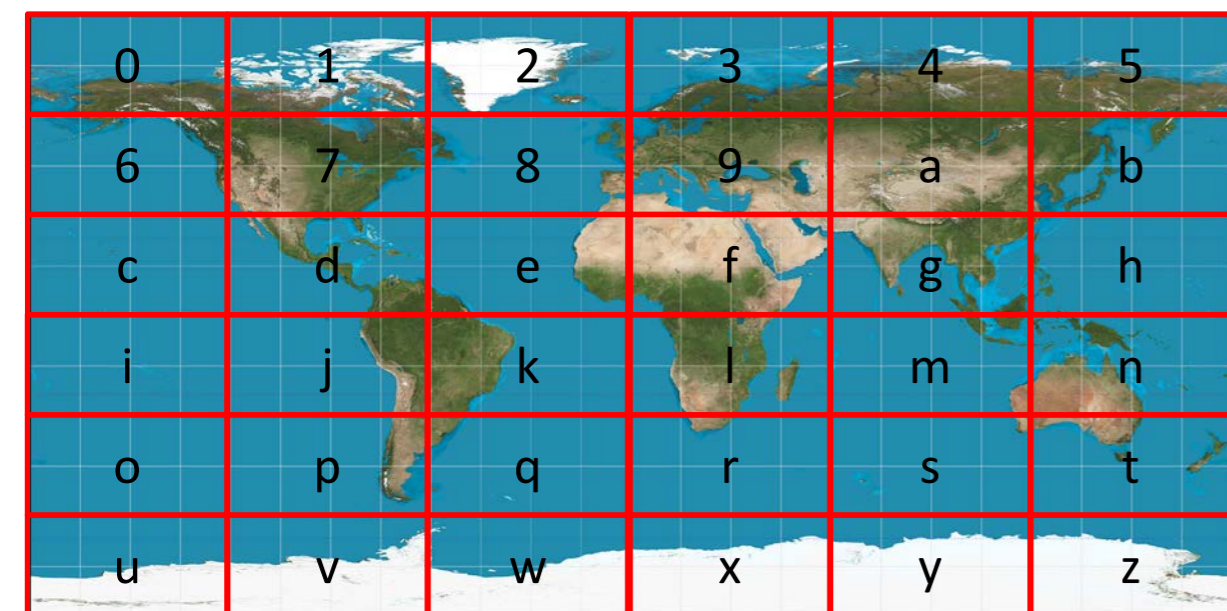


Divide an equirectangular projection into a six by six grid:



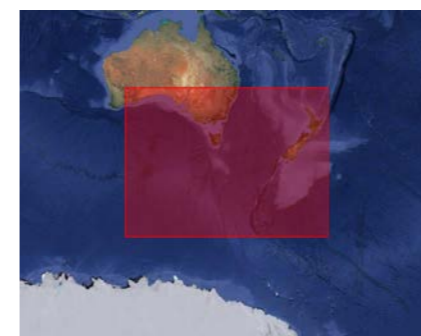
Choose the letter for the box containing your location. For NZ, we'd choose "t".

Then divide *that* box into a 6x6 grid:



For Christchurch, we'd choose "h".

Keep going until you achieve your desired level of accuracy:



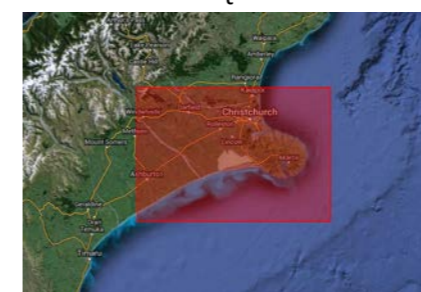
box height = 3336 km

t



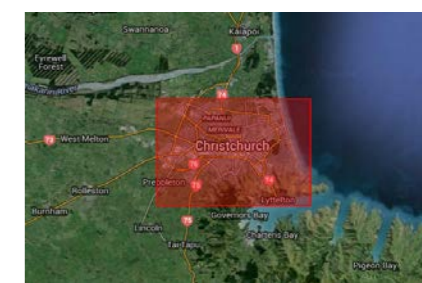
box height = 556 km

th



box height = 92.66 km

thp



box height = 15.44 km

thp9



box height = 2.574 km

thp9e



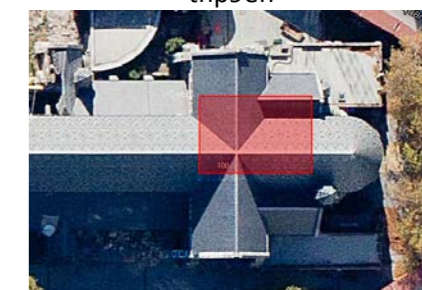
box height = 429 m

thp9en



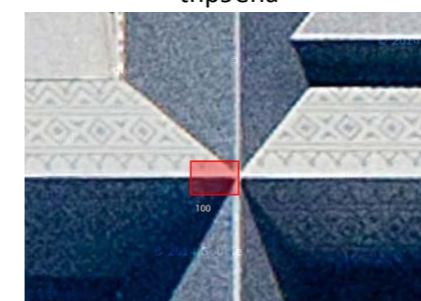
box height = 71.5 m

thp9ena



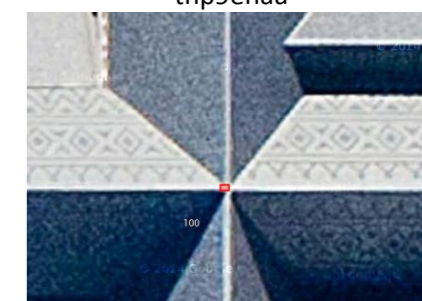
box height = 11.9 m

thp9enaa



box height = 2.0 m

thp9enaap



box height = 33.4 cm

thp9enaaph